

"FLEX" PANELS

4 INSERTIONS

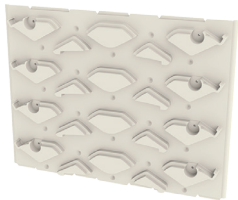
For horizontal or angled basket insertion.

SYMMETRICAL

Left or right.

ACCESSORIES

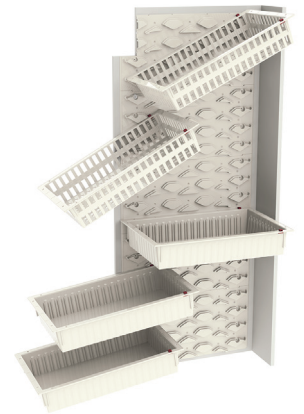
Support wheel for "flex" side panel (PNLWHEEL)



Flex Panel E-Type
Depth 40 cm,
Height 30 cm
PNL(EU)



Flex Panel U-Type
Depth 60 cm,
Height 30 cm
PNL(EU)



"TILT" PANELS

9 INSERTIONS

For maximum storage

FUNCTIONALITY

Tilt functionality while modules are pulled out

ACCESSORIES

Support wheels for "tilt" side panel (PNWL-SET)



Tilt Panel E-Type
Depth 36.5 cm,
Height 37.5 cm
PNL(E)-NW

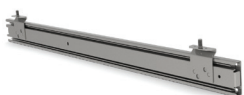


Tilt Panel U-Type
Depth 56.5 cm,
Height 37.5 cm
PNL(U)-NW



TELESCOPIC RAILS

Tonon offers the possibility of combining telescopic rails made of high-quality steel that can hold up to 40 kg.



BBG-RK-U (60 cm)



BBG-RK-E (40 cm)

* For safety reason it is not allowed to load more than 10 kg in modules placed on telescopic rails at upper levels (above 140 cm)

